



Poverty and Social Exclusion of Persons with Disabilities

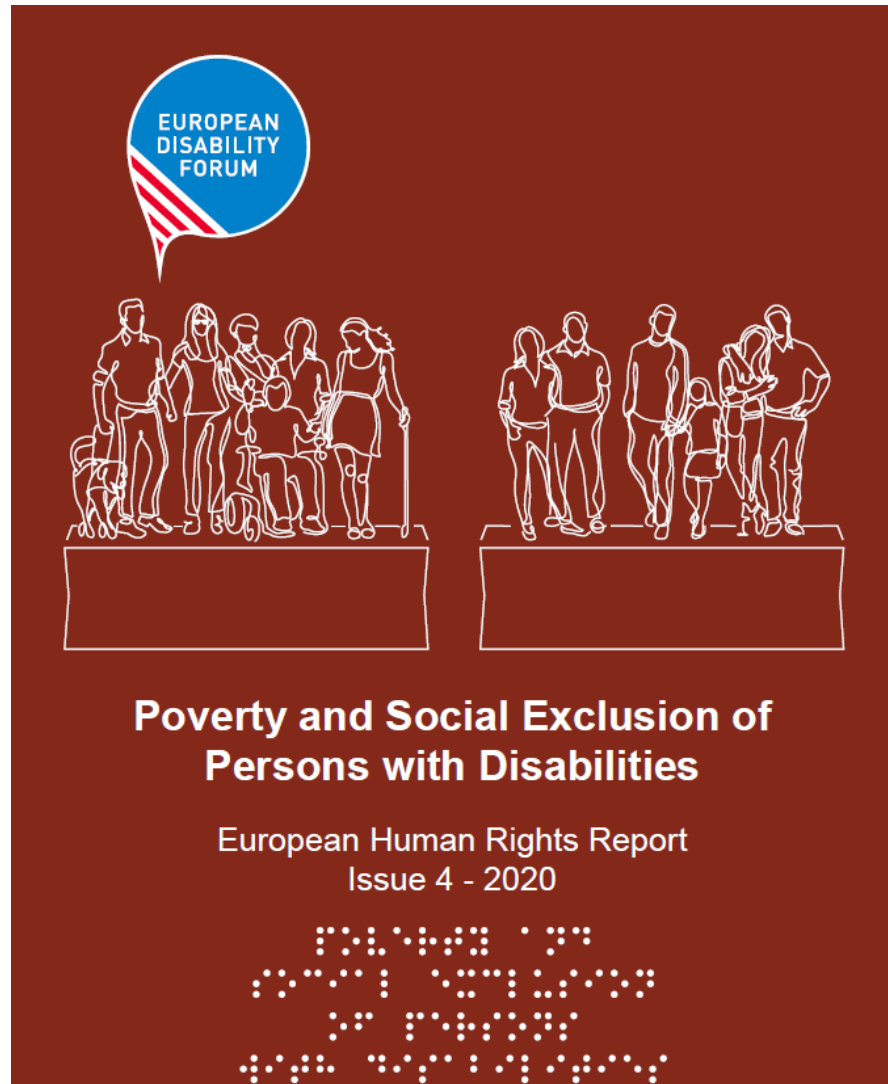
Haydn Hammersley

22 April 2020

Today's programme

- **Haydn Hammersley** –EDF
- **Vera Hinterdorfer** – Vice-President of the European Anti-Poverty Network
- **Elena Schubert** - European Commission, Policy Officer
- Directorate-General for Employment, Social Affairs and Inclusion - Social Affairs - Disability and Inclusion
- **Stijn Broecke** - Senior economist in the Employment, Labour and Social Affairs Directorate of the Organisation for Economic Co-operation and Development (OECD)
- **Loredana Dicsi** - EDF

Release of the report



- Available on our website as of Monday 20 April
- Available in accessible PDF format
- Available in Easy-to-read

Poverty rates

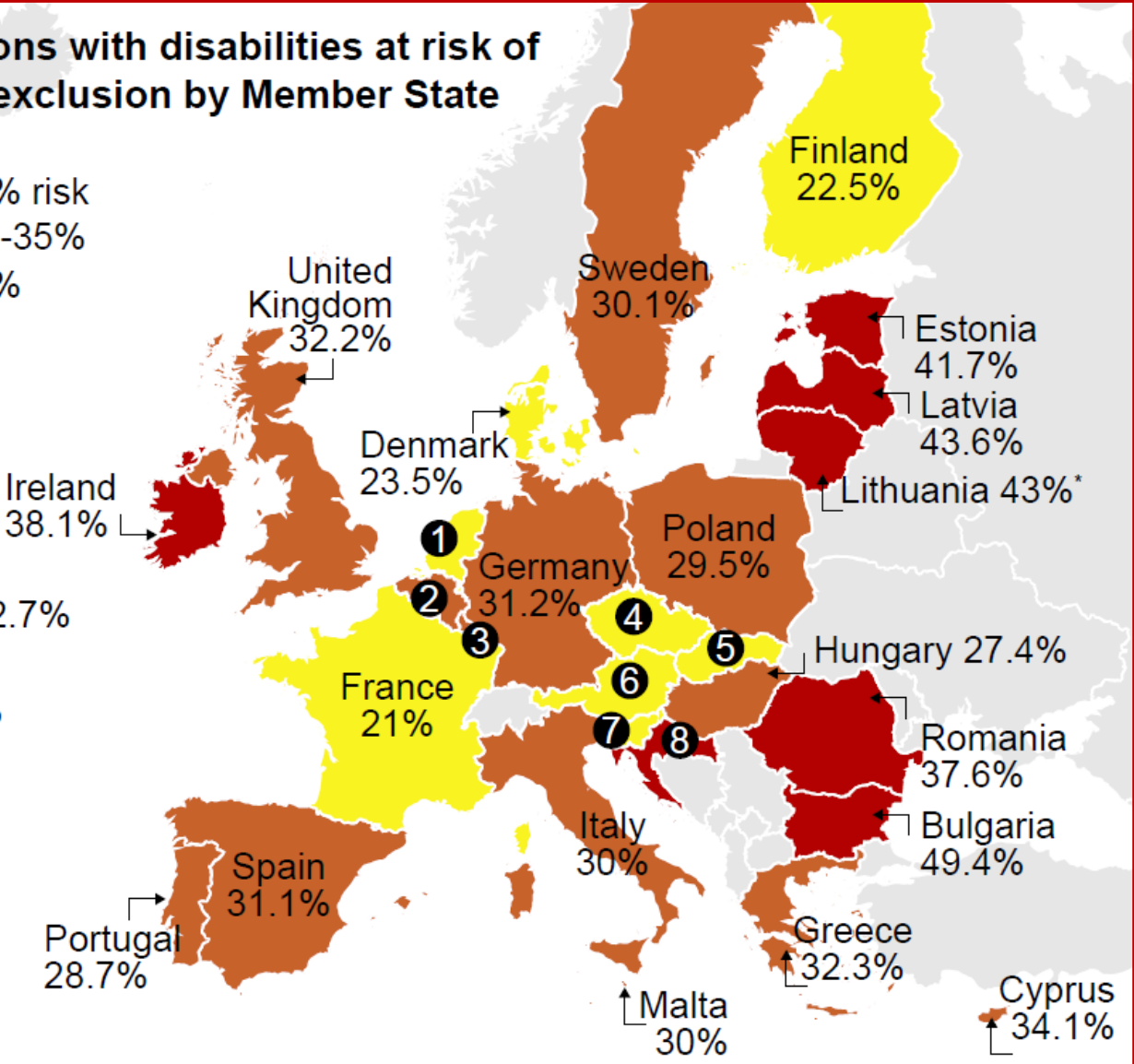
- 28.7% of persons with disabilities in the EU are at risk of poverty and social exclusion
- For persons without disabilities the rate is 19.2%

Poverty in the Member States

Percentage of persons with disabilities at risk of poverty and social exclusion by Member State

- Countries with <25% risk
- Countries with 25%-35%
- Countries with >35%

- ① The Netherlands 22.7%
- ② Belgium 30.5%
- ③ Luxembourg 28.8%
- ④ Czechia 23.8%
- ⑤ Slovakia 18.4%
- ⑥ Austria 21.7%
- ⑦ Slovenia 24%
- ⑧ Croatia 37.1%



Data from 2018.

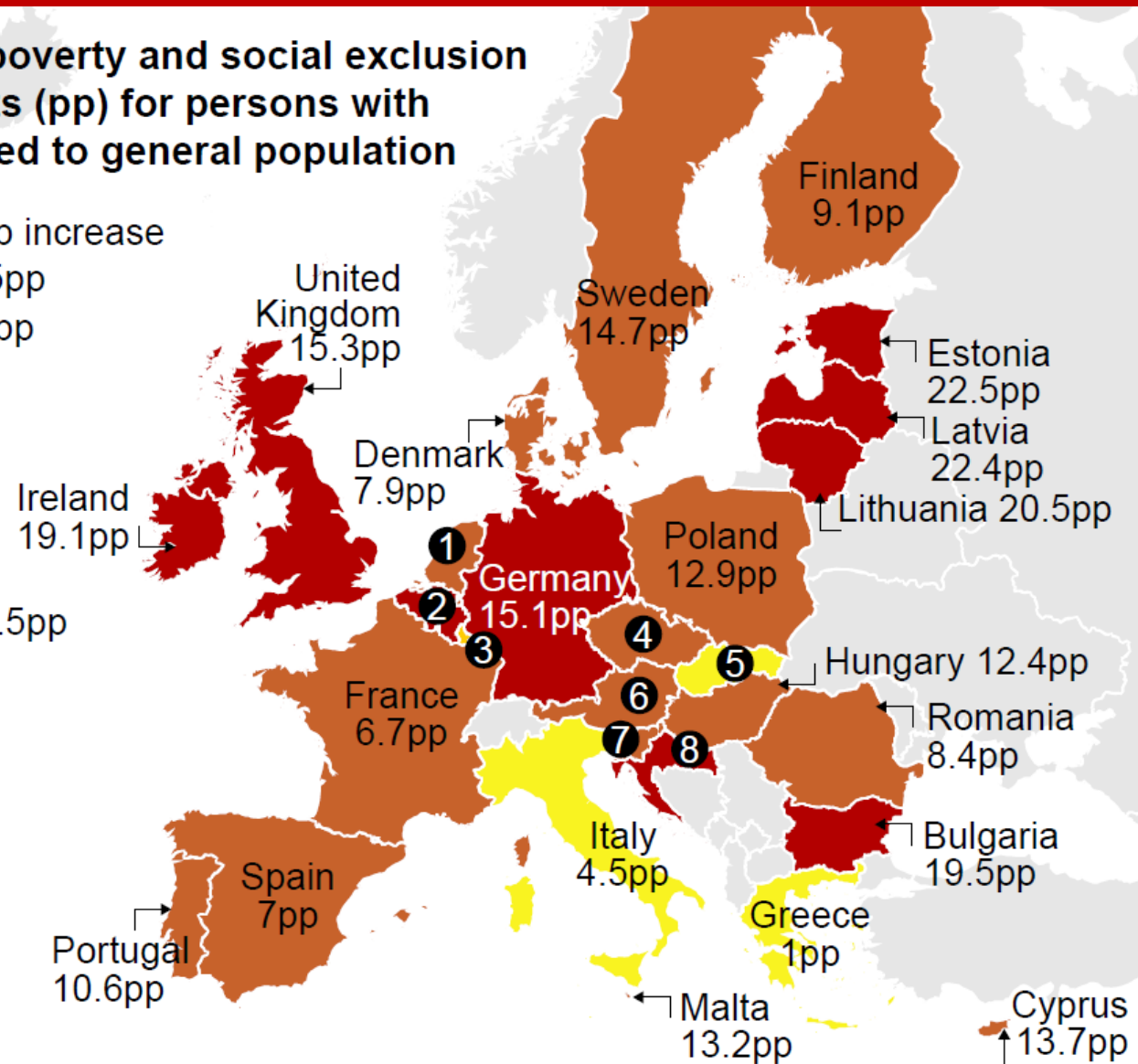
Data for Ireland, UK and Slovakia from 2017.

The poverty gap

Increase in risk of poverty and social exclusion in percentage points (pp) for persons with disabilities compared to general population

- Countries with <5pp increase
- Countries with 5-15pp
- Countries with >15pp

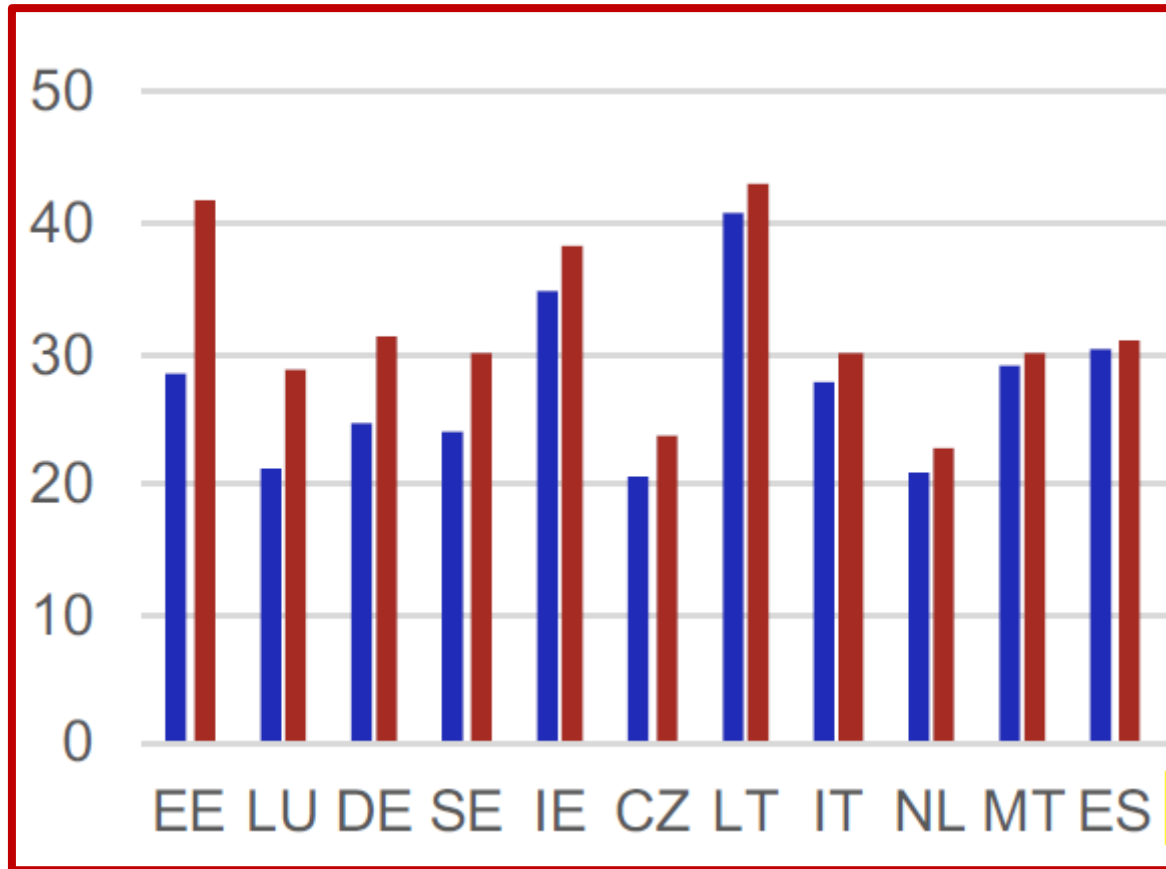
- 1 The Netherlands 8.5pp
- 2 Belgium 15.2pp
- 3 Luxembourg 9.9pp
- 4 Czechia 13.5pp
- 5 Slovakia 4.9pp
- 6 Austria 7.6pp
- 7 Slovenia 11.1pp
- 8 Croatia 17.9pp



Poverty for women

- 29.5% of women with disabilities in the EU are at risk of poverty and social exclusion compared to 27.5% of men
- In 22 of the 27 Member States, and in the UK, women are more at risk.

Poverty increase over the past decade

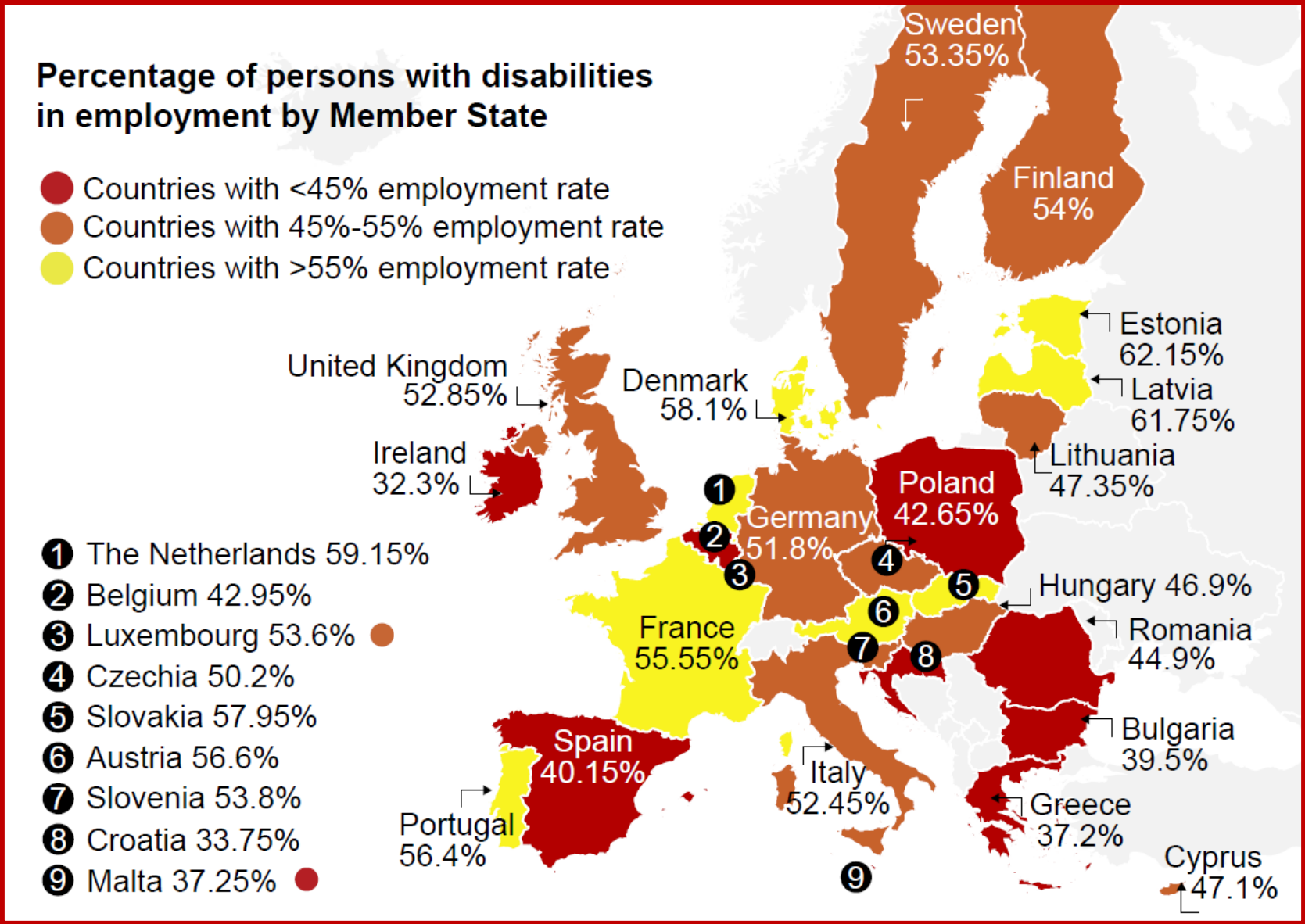


- In 11 Member States the risk of poverty has increased since 2010

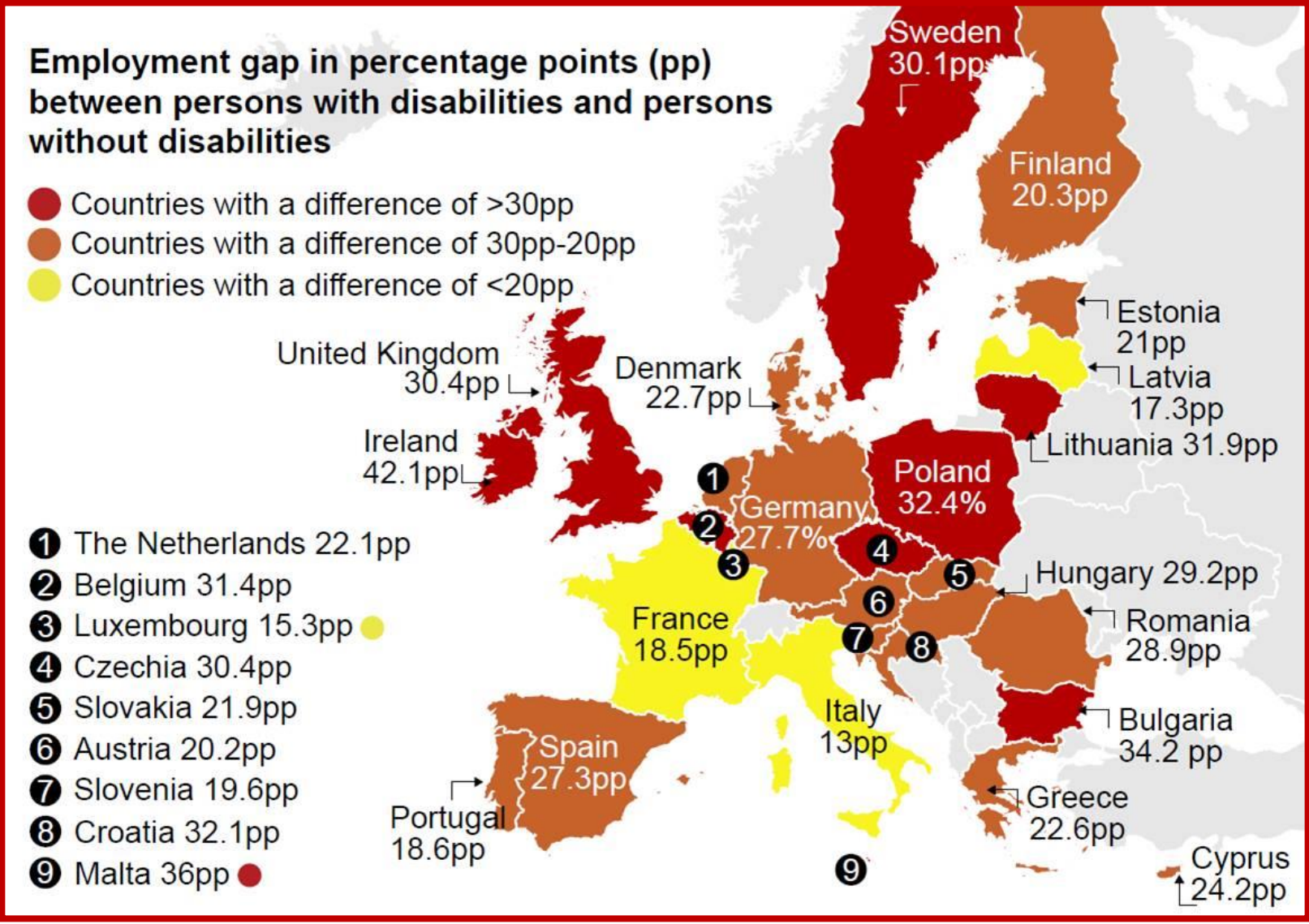
Employment rates

- only 50.8% of persons with disabilities are in employment, compared to 74.8% for persons without disabilities.
- 48.3% of women with disabilities are in employment in the EU
- These figures do not show the quality of employment and do not take into account people in institutions

Employment in the Member States

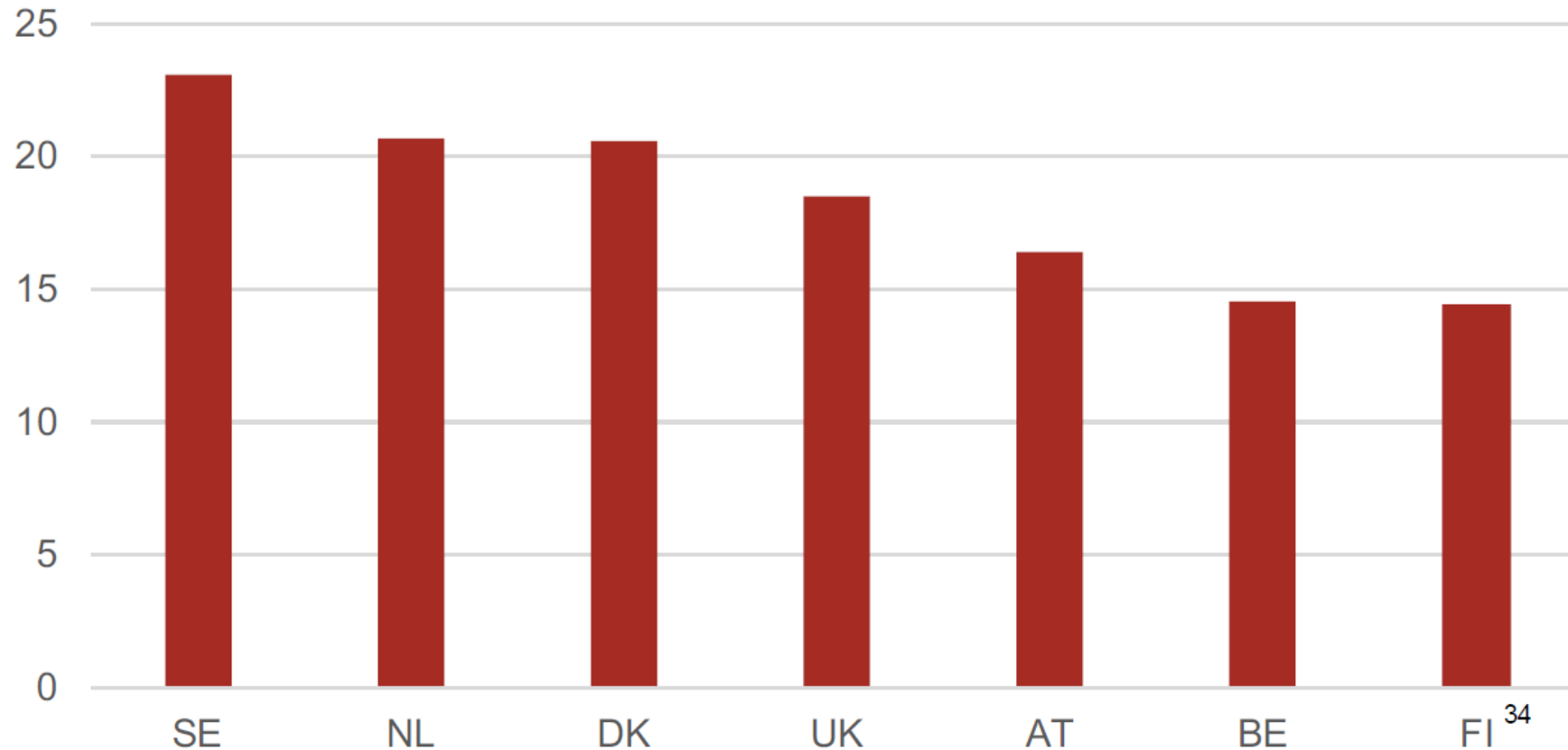


Employment gap



Extra cost of living

Estimated average additional cost of living for a person with a disability, based on ability to make ends meet (thousand € per year)



Extra costs for families

Research from UK suggests that the poverty rates:

childless couples without disabilities = 8%.

Childless couples where one person has a disability = 28%.

Households with children where at least one person has a disability = 43%

In 27% of households where at least one person has a disability, none of the adults have jobs.

Homelessness

- Study from NL showed 29.5% of homeless people had an intellectual disability (average prevalence 0.7%)
- In UK 12.3% of homeless people showed autistic traits in line with diagnosis (average prevalence 1%)
- In UK 80% of homeless people reported having mental health issues and 45% had actually been diagnosed

What could be the implications of COVID 19?

- The situation is recent and we do not yet have any figures on the impact on poverty and social exclusion
- The economic downturn is likely to especially hit persons with disabilities
- Persons with disabilities typically have more precarious work contracts and are often not eligible for state support for COVID-unemployment
- The impact on national budgets could see a return to austerity and less investment in disability support.

Thank you for your attention

The European Disability Forum

www.edf-feph.org

Avenue des Arts 7-8, Bruxelles
1210, Belgium

Twitter: @MyEDF

Facebook: @MyEDF

