

POVERTY WATCH 2020

"Covid-19 supercharging poverty"

data and experiences from the ground

29 January 2021

Online conference

14.00-16.30

With MEPs

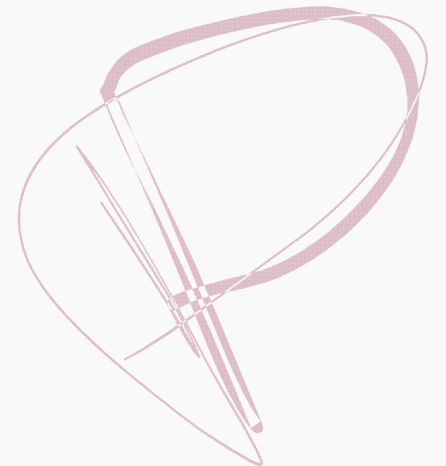
Cindy Franssen & Marisa Matias





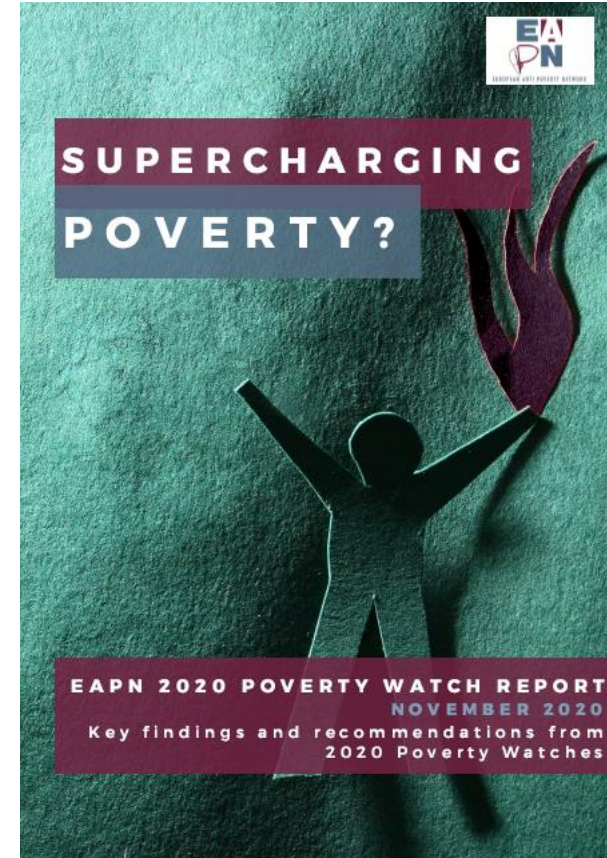
Outline

1. **Poverty Watch 2020**
2. **Trends in poverty and social exclusion**
3. **Impact of Covid-19**
4. **Challenges and priorities**
5. **Main messages**
6. **Recommendations**

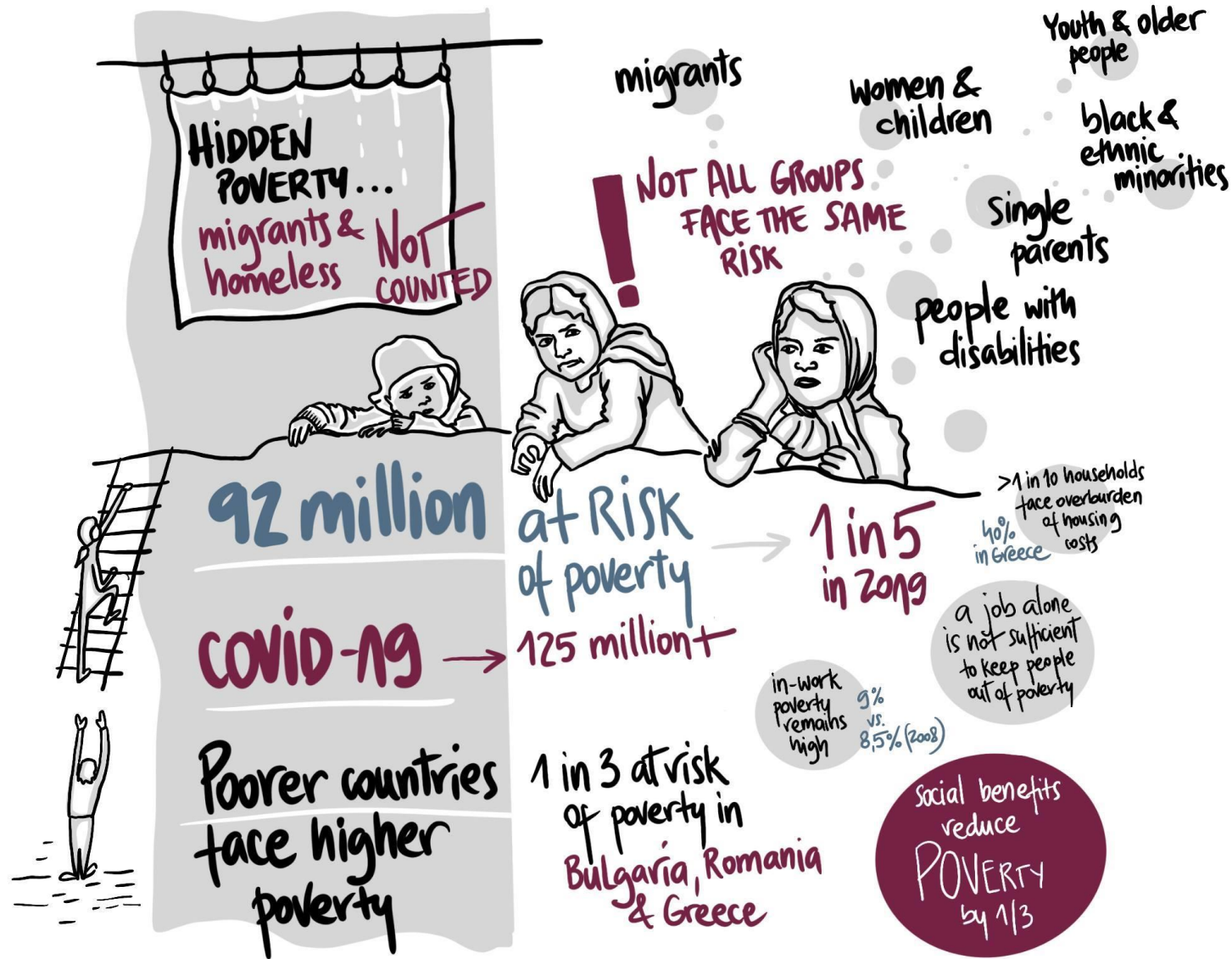


Poverty Watch 2020

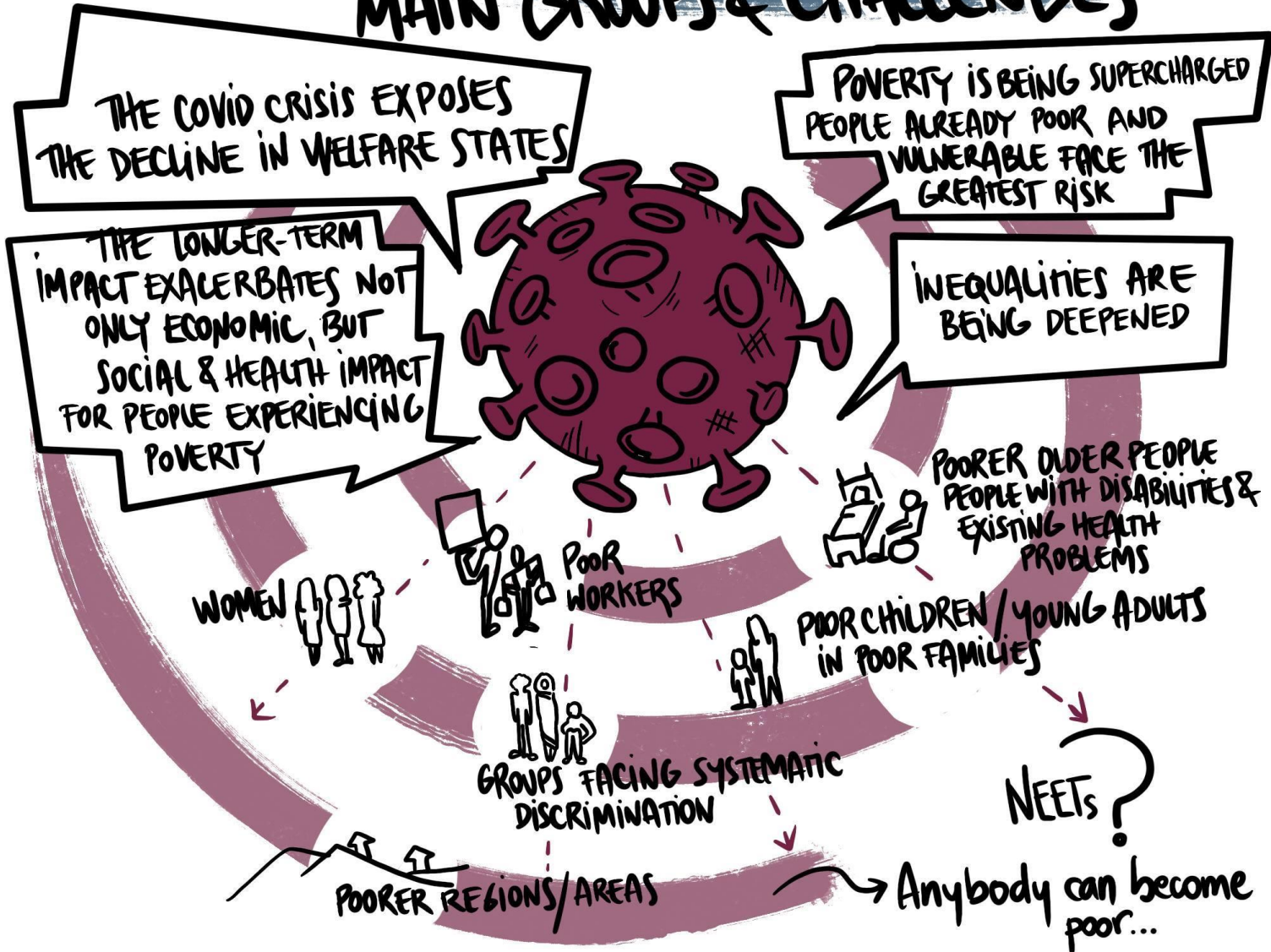
- What is it and what is it not?
- 28 Poverty Watches from national and European Organisation members**
- 2020 – not a “normal” year...
- EU at a turning point**
 - Prioritise measures against poverty?**
 - Allowing the supercharging of poverty?**



WHAT IS HAPPENING WITH POVERTY & INEQUALITY



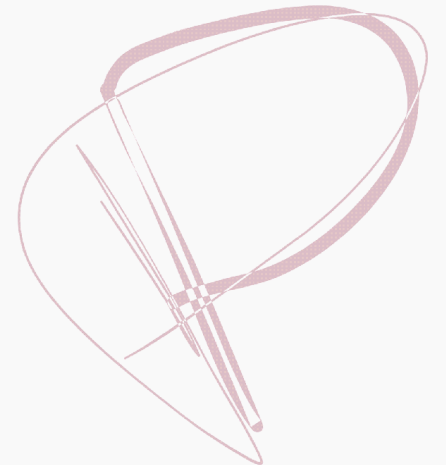
IMPACT OF COVID-19 - MAIN GROUPS & CHALLENGES



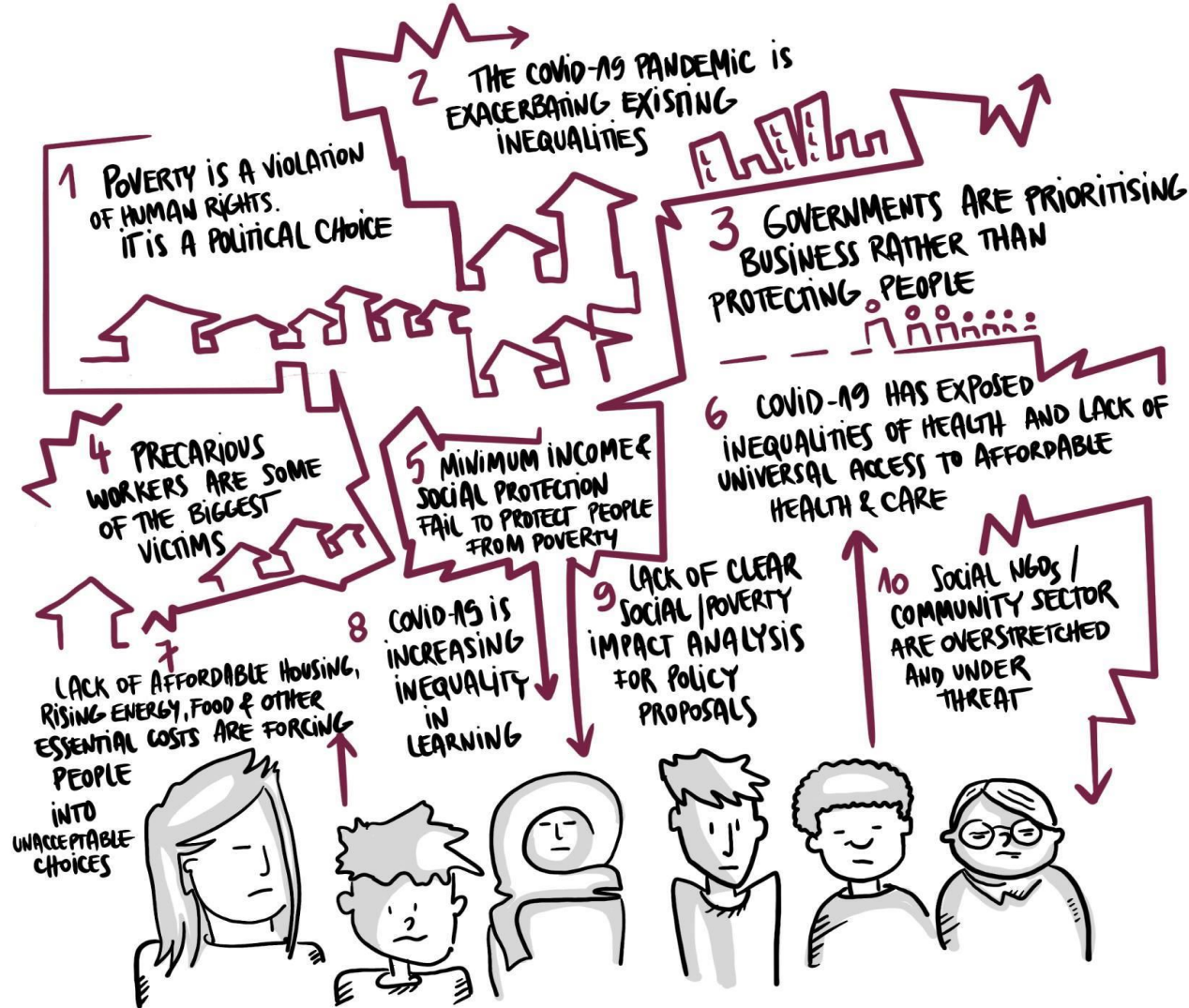
OVERALL KEY CHALLENGES & PRIORITIES



2020 Poverty watches



KEY MESSAGES





Recommendations

- An ambitious Action Plan to implement social rights in the EU and poverty-proof Recovery and Resilience Plans**
- Adopt a rights-based integrated EU anti-poverty strategy to guarantee the right to a dignified life**
- Guarantee the right to a decent income**
- Guarantee rights to quality, affordable services**
- Ensure a Social, as well as Green Deal, including Tax Justice**
- Strengthen structured participation of people in poverty and NGOs in decision-making and support social economy**





Poverty Watch 2020 | COVID-19 supercharging poverty

29 January 2021

#PovertyWatch

Thank you for your attention!

anna.krozser@eapn.eu

